

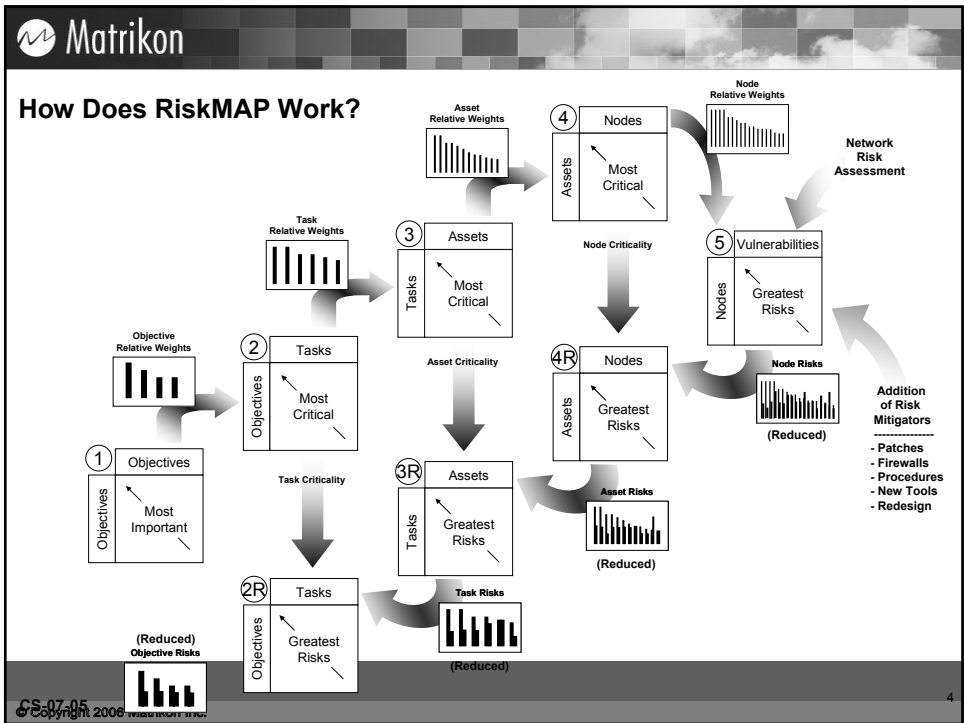
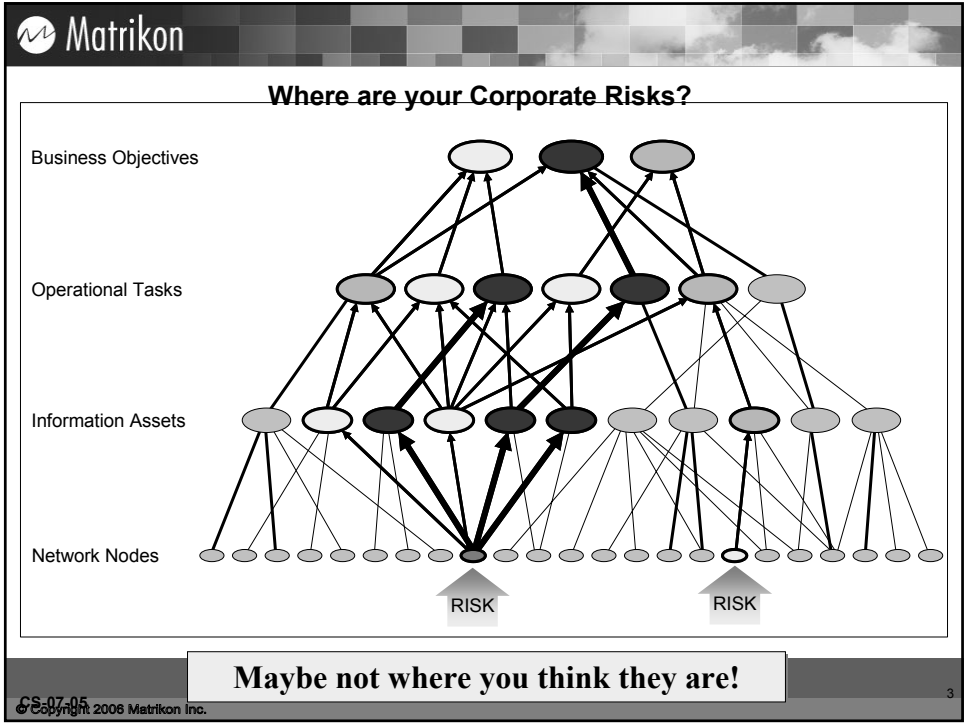
## SANS Process Control and SCADA Summit 2008

### The Commercialization of RiskMAP

Tom Stogdale – Industrial Security & Compliance, Matrikon

#### For those who don't know...

- Based on MITRE work begun in 1995, the RiskMAP method has been applied to a variety of Air Force systems.
  - Adapted in 2006 under an I3P task, funded by DHS, to help secure the Oil & Gas Sector from cyber threats.
- RiskMAP draws upon Analytical Hierarchy Process (AHP) and Quality Function Deployment (QFD) methods to create a “Business Model.”
- RiskMAP combines user-provided network risk assessment results with tailored roll-up rules to create a “Risk Model.”



## The Industries We Serve



Mining

Alcan, Anglo Coal, Barrick Gold, Bema Gold, BHP Billiton, Falconbridge, Iluka, PhelpsDodge, Rio Tinto, Suncor, Syncrude, Xstrata



Petrochemical

Bayer Material Science, BOC, Braskem, Chevron, Dow, Ecopetrol, Marathon, NOVA Chemicals, Sasol, Shell, Tesoro



Oil & Gas

BP, ConocoPhillips, CNRL, Enbridge, Encana, ExxonMobil, Husky, Keyera, Nexen, OXY, Santos, Saudi Aramco, Total, Wintershall



Power

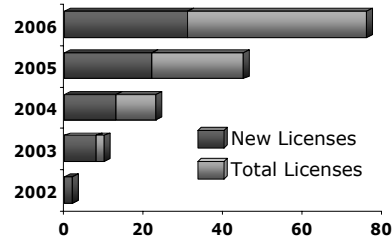
Ameren, BCTC, ConEdison, Constellation, DTE, Dynegy, Entergy, Meridian, NRG, Ontario Power, PG&E, RWE, Southern, TransAlta



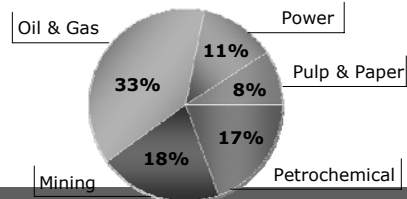
Pulp & Paper

Abitibi, Ainsworth, Boise Cascade, Canfor, Georgia-Pacific, Kimberly-Clark, Louisiana-Pacific, MeadWestvaco, Weyerhaeuser

### Corporate Licenses



### Revenue Distribution



Together with our clients, we're shaping the future of industry

## Commercialization strategy

- Short Term Goals
  - Enhance User Input
  - Enhance Graphical Interface
  - Introduce Ability to Interpret at intermediate stages
    - Risk rollups
    - Interventions
- Long Term Goals
  - Adapt for other industrial settings
    - Upstream – Oil & Gas
    - Power Generation
  - Evolution to more in-depth user customization.

ProcessNet - Microsoft Internet Explorer

File Edit View Favorites Tools Help

Address http://localhost/ProcessNet/ISAPI/netportal/netportal.dll/html/NetObjects.xml?GLT=NetView

## Powerful Visualization Tools Help Prioritize the Key Issues

**Enterprise: Matrikon** All

Start: [-3d] End: [-2d]  Removed Assets: 3

**Open Printable Report**

Group: [No Group] Size: [Inverted RPI] Color: [Alarm Count] 0 5 > 10 n/a

Part Hierarchy											
Asset Type											
410-TC...	210-S...	410-P...	410-L...	430-L...	540-L...	540-L...	400-F...	400-F...	520...	520...	472...
472-LC...	210-S...	470-L...	110 L...	472...	460...	420...	420...	430...	430...	520...	410...
472-LC...	530-L...	470-L...	470-L...	472...	410...	520...	410...	410...			
410-TC...	530-L...	210 F...	470-L...	510...	430...	460...	410...	530...	472...	410...	
410-TC...	410-P...	210-F...	220-L...	460...	430...	220...	460...	530...	460...		
472-TC...	410 P...	410-L...	220-L...	460...	520...	520...	210...	410...	410...		
472-TC...	410 P...	410-L...	420-L...	520...	520...	472...	460...	510...			
472-TC...	410 P...	410-L...	430-L...	460...	520...	472...	430...	410...	520...		

Filters:

Asset Name:

Asset Type:

Asset Group:

Service Factor:

RPI:


Slickness:

Percent Saturation:

Compression Factor:

Currently displaying 160 of 160 items

Local intranet 7:59 PM



# Thank You.

© Copyright 2006 Matrikon Inc.